



Kermode (pronounced Ker-MOH-dee) helps you improve your digital media literacy skills, fight misinformation, and become more confident navigating the digital world. Teachers and instructors can use it to facilitate strong research skills among their students. The active learning tools in Kermode encourage students to answer

open-ended questions about the content they are evaluating, focusing on accuracy, bias, and timeliness. Through this analysis, students will be able to determine whether a source of information is credible or not.


Go to <https://www.innisfilidealab.ca/> and click on the **Digital Library** tab. On the drop-down menu, select **Research, Language, Learning & More**, click on **Homework Help/General Knowledge**, and click on **Kermode**. Type your library card number into the box that appears.

Card Number:

Follow the login instructions: click the **Proceed to Kermode** link and on the license key, type Innisfil2022, into the box provided and click **Login**.

Copy and paste the web address of the website you are interested in evaluating. **Kermode** will then assess for accuracy, bias, and timeliness by analyzing the page for over 20 different elements, including confirmation bias, article type, timeliness, etc. (see more elements listed on the next page). It pulls information from the page and then highlights the important points in a clear and succinct format. As you scroll through, make sure to click

Load More

to see all of the elements analyzed. Once the site has been processed, **Kermode** gives you a report of elements to be considered when analyzing a website. It gives you space to give your comments under **NotePad**. Click the green plus symbol  to type your answer and

Advertising



Are there advertisements on the page? How might this affect the information provided?

NotePad:



Good to know:



to learn something about that section in **Good to know**. It will ask you questions to help you think critically about the content on the website. For example, the **Advertising** section asks, 'Are there advertisements on this page? How might this affect the information provided?' It will also let you know the registration date of the website and ask you 'How does this affect its credibility?' Your students will then be able to determine if the website is suitable to use as part of the research for their project.



How easy is it to share this article? How many clicks would it take to share this with everyone you know?

Very easy. 2-3 clicks.

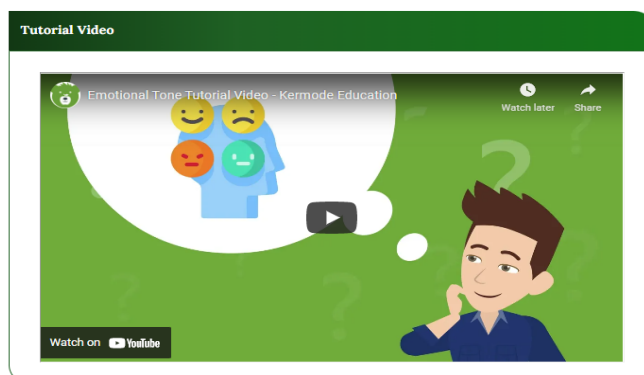
***Good to know:** Most media online is incredibly easy to share because it means more clicks/status/revenue for the content providers. You're also more likely to trust content that is shared by friends. It is up to you to judge what you share online very carefully.*

Here are some of the elements that are analyzed on a piece of online content:

Advertising
Registration Date
Emotional Tone
Superlative Adjectives
Article Type
Patience
Timeliness

Location of Domain Host
Confirmation Bias
Sentiment Analysis
Punctuation
Point of View
Content Creator
Writing and Grammar

As you scroll through the sections, you can watch tutorial videos to learn more about how **Kermode** has analyzed the online content.



Share your work

Your work is automatically saved to this unique Kermode URL:

<https://app.kermodeeducation.com/worksheets/d28f06c6-dab6?license>


- 1.) You can copy and share or keep track of your work.
- 2.) Send the link in an email to your educator

If you navigate away from this page without saving your Kermode URL you lose your work.

Copy Link

Cancel

To analyze a new page, click **Analyze a new page** in the top right. It will warn you that if you navigate away from the page you are on, that work will be erased unless you have copied the web address somewhere else.

To share your work, click the share symbol in the top right . The pop-up window will let you know that your work gets saved automatically through the web address provided. Click **Copy Link** to copy your work. Paste the link to wherever you would like to share it, such as in an email to your teacher. Make sure to keep the web address for each online content piece you analyze because as soon as you **Analyze a new page**, you will lose your work.

Are you sure you want to analyze a new page?

All information with your current session will be lost unless you save your work and copy the unique URL.

Continue to analyze a new page?

Yes

No

To learn more about **Kermode**, click the [New to Kermode? Start HERE](#) link at the bottom of the **Home** page. There you will find **Resources** like **Tutorial Videos**, **Guides**, and **Lesson Plans**.